

FA/FI



*Images for illustrative purposes only

Simply Better Trucks



The Power You Need, the Durability You Count On



Engines of Profitability

The fuel-efficient, common rail, direct injection engine with four valves per cylinder is designed to deliver ample power and torque while lowering operating costs.

Smoothing the Way to Business Success

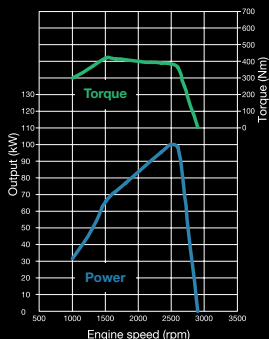
FAVI trucks are equipped with 6-speed transmissions designed for smoother operation, to reduce driver fatigue and improve turn-around time.

4D37

DIESEL 3.907L

100kW
/2,500rpm

420Nm
/1,500rpm

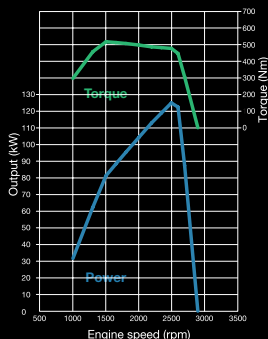


4D37

DIESEL 3.907L

125kW
/2,500rpm

520Nm
/1,500rpm



***With a Solid Foundation
for Business Growth***

The frame members in the chassis are not only deeper and thicker. They are shot-peened and powder-coated for greater surface strength and resistance to corrosion.



Able to Carry Bigger Loads

Rear suspension with a taller stack of laminated leaf springs enhance load capacity, while thicker leaves also increase durability.

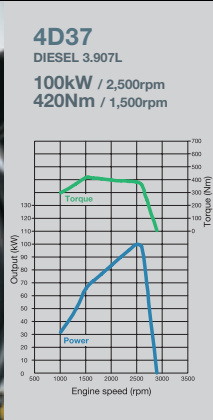
Stronger where it counts

To further increase load capacity, the heavy duty banjo-type rear axle has been strengthened with a larger crown wheel and larger diameter shaft.



*Actual vehicle may differ slightly from pictures shown.

Light-footed and Powered for Profit



E-Viscous fan

Intermittent operation of E-Viscous fan reduces load on engine, improving fuel efficiency.

Fuel-efficient Common Rail Engine

The fuel-efficient, common rail, direct injection engine with four valves per cylinder is designed to deliver ample power and torque while lowering operating costs.



Engine RPM throttle control

Demand based rpm setting.



Smooth, Durable Six-speed Transmission

The six-speed (6F,1R) overdrive transmission combines multiple synchronizer rings and a cable type shift mechanism to make shifting smoother and easier. The large diameter clutch plate and organic clutch material increase durability.



Intelligent Instrument Cluster

The LED panel makes vital information more visible, and a buzzer will sound if the engine overheats. The Trip Mileage Indicator makes it easy to monitor distance traveled, average speed and fuel consumed.



Fuel theft control

Meshed grill at the mouth of the fuel tank prevents fuel theft between trips.



A Great Place to Work

Fully adjustable seats. A tilt-and-telescoping steering wheel and smooth-shifting transmission. Lined roof, side trim, and handy console pocket for storage of small objects. All in a comfortable cabin that reduces driver fatigue and increases productivity.

Standard Air conditioned cabin with Power window and central locking system available to enhance the driver comfort.



LED lamp

Updated and more durable design for greater visibility in all types of light and weather conditions.



Music system

A richer and more enjoyable audio entertainment experience.

Signaling Beauty in Every Turn

Style, fit and finish. These turn signal lamps have it all.



Aerodynamic Cab Design

Aerodynamic design reduces wind resistance and lowers fuel cost. It also reduces noise and keeps the cabin quieter.



Exceptional Exteriors

Striking design ensures that your fleet always stands out from the competition.

*Actual vehicle may differ slightly from pictures shown.

SPECIFICATIONS

FA9-137S

Make	FUSO	
Range	FA	
Model	FA9-137S	
Model Code	FAV1PK1RBSA	
Axle Layout	4x2	
Cab	Forward Control	
Crew	3 seating	
Vehicle type	Freight Carrier / Tipper	

Mass Data (kg)		
GVM	Manufacturer's gross vehicle mass	9600
GCM	Manufacturer's gross combination mass	9600
D/T	Permissible max towing drawing vehicle mass	9600
GA-Front	Manufacturer's front axle mass	3510
GA-Rear	Manufacturer's rear axle mass	6520
V	Permissible maximum vehicle mass	9600
AF	Permissible maximum front axle mass	3510
AR	Permissible maximum rear axle mass	6520
UF	Unladen front axle mass	1985
UR	Unladen rear axle mass	1240
UT (Tare)	Total unladen mass	3255
Permissible Body + Payload		6345
Fuel Tank (Litres)	Capacity	200

Dimensions (mm)		
OL	Overall length	6985
OW	Overall width	2200
CA	Cab to Axle	3355
OH	Overall height	2390
FOH	Front overhang	1275
ROH	Rear overhang	1790
WB	Wheelbase	3760

Performance		
Maximum Running Gradeability (%)		29.0%
Maximum Speed (SA Legislation)		80 km/h
Minimum turning radius		6.9 m

Standard Equipment / Features		
Arctic White (AW1)		
Air Conditioner / Heater / Demister		
Exhaust Brake System		
Lockable Fuel Tank Cap and Fuel Theft Protection		
12V Accessory Power Outlet		
Radio AM/FM + USB + AUX		
Central Locking		
Electrical Windows		
Intelligent Instrument Cluster (DTE, Fuel Economy, Engine Run Hours)		
Dual Door Mirrors + LH Front and Side Safety Mirrors		
Variable Engine RPM Control		
E-Viscous Fan		
Telescopic and Tilt Steering Column with Steering lock		
Additional Roof Storage		
Fully trimmed Cabin		
LED Lamps		
Pendant Type Brake Pedal		
Cab Coloured Bumper		

Standard Services		
4 year / 240 000 km Warranty		
15 000 km maintenance schedule		

Engine		
Make	FUSO	
Model	4D37	
Configuration	Diesel In-line 4	
Capacity (cm3)	3907	
Type	Four stroke water cooled direct injection turbocharged diesel engine	
Power at RPM	100kW @ 2500 - 2500 rpm	
Torque at RPM	420Nm @ 1500 - 1500 rpm	
Emission standards	Euro III	
Generator	24V / 45A	
Air Cleaner	Dual filter, paper element mechanical chock, indicator	
Suction	Snorkel and rain cap	
Governor	Electric control type	

Transmission		
Make	FUSO	
Model	MO36S6	
Type	Synchronmesh gears	
Shift	Manual	
No. of gears forward	6	
Low gear ratio	5.4	
High gear ratio	0.7111	

Clutch		
Make	FUSO	
Model	C3W28	
Type	Hydraulic Single Dry Plate	
Diameter (mm)	330	

Drive Axle		
Reduction type	Fully Floating, Single Reduction	
Final Ratio	5.13	

Suspension		
Front	Semi Elliptic-multi leaf spring with shock Absorbers and Anti Roll Bar	
Rear	Semi Elliptic-multi leaf spring with shock Absorbers	

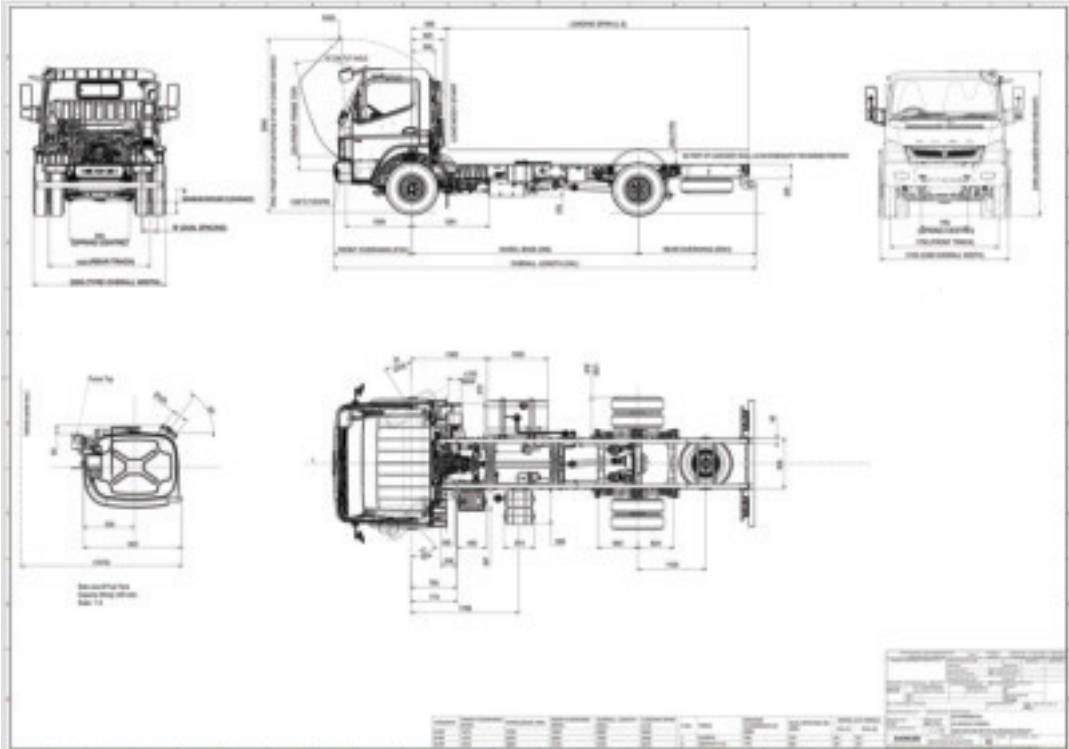
Steering		
	Hydraulic Integral Power Assisted	

Brakes		
System type	Pneumatic, Foot operated, Dual line acting on all wheels	
Front	Drum	
Rear	Drum	
ABS	Yes	
Park/Emergency System	Yes	
Auxiliary Brakes	Exhaust brake	

Tyres and Rims		
Tyre Sizes	235 / 75 R 17.5	
Wheel type	Drum Type	

Electrical		
System	24V	

DIMENSIONS



SPECIFICATIONS

FA9-137L

Make	FUSO	
Range	FA	
Model	FA9-137L	
Model Code	FAV1PK1RBSA	
Axle Layout	4x2	
Cab	Forward Control	
Crew	3 seating	
Vehicle type	Freight Carrier	

Mass Data (kg)		
GVM	Manufacturer's gross vehicle mass	9600
GCM	Manufacturer's gross combination mass	9600
D/T	Permissible max towing drawing vehicle mass	9600
GA-Front	Manufacturer's front axle mass	3510
GA-Rear	Manufacturer's rear axle mass	6520
V	Permissible maximum vehicle mass	9600
AF	Permissible maximum front axle mass	3510
AR	Permissible maximum rear axle mass	6520
UF	Unladen front axle mass	2070
UR	Unladen rear axle mass	1240
UT (Tare)	Total unladen mass	3310
Permissible Body + Payload		6290
Fuel Tank (Litres)	Capacity	200

Dimensions (mm)		
OL	Overall length	8195
OW	Overall width	2200
CA	Cab to Axle	4275
OH	Overall height	2390
FOH	Front overhang	1275
ROH	Rear overhang	2120
WB	Wheelbase	4800

Performance		
Maximum Running Gradeability (%)		29.0%
Maximum Speed (SA Legislation)		80 km/h
Minimum turning radius		8.8m

Standard Equipment / Features		
Arctic White (AW1)		
Air Conditioner / Heater / Demister		
Exhaust Brake System		
Lockable Fuel Tank Cap and Fuel Theft Protection		
12V Accessory Power Outlet		
Radio AM/FM + USB + AUX		
Central Locking		
Electrical Windows		
Intelligent Instrument Cluster (DTE, Fuel Economy, Engine Run Hours)		
Dual Door Mirrors + LH Front and Side Safety Mirrors		
Variable Engine RPM Control		
E-Viscous Fan		
Telescopic and Tilt Steering Column with Steering lock		
Additional Roof Storage		
Fully trimmed Cabin		
LED Lamps		
Pendant Type Brake Pedal		
Cab Coloured Bumper		

Standard Services		
4 year / 240 000 km Warranty		
15 000km maintenance schedule		

Engine		
Make	FUSO	
Model	4D37	
Configuration	Diesel In-line 4	
Capacity (cm3)	3907	
Type	Four stroke water cooled direct injection turbocharged diesel engine	
Power at RPM	100kW @ 2500 - 2500 rpm	
Torque at RPM	420Nm @ 1500 - 1500 rpm	
Emission standards	Euro III	
Generator	24V / 45A	
Air Cleaner	Dual filter, paper element mechanical chock, indicator	
Suction	Snorkel and rain cap	
Governor	Electric control type	

Transmission		
Make	FUSO	
Model	MO36S6	
Type	Synchronmesh gears	
Shift	Manual	
No. of gears forward	6	
Low gear ratio	5.4	
High gear ratio	0.7111	

Clutch		
Make	FUSO	
Model	C3W28	
Type	Hydraulic Single Dry Plate	
Diameter (mm)	330	

Drive Axle		
Reduction type	Fully Floating, Single Reduction	
Final Ratio	5.13	

Suspension		
Front	Semi Elliptic-multi leaf spring with shock Absorbers and Anti Roll Bar	
Rear	Semi Elliptic-multi leaf spring with shock Absorbers	

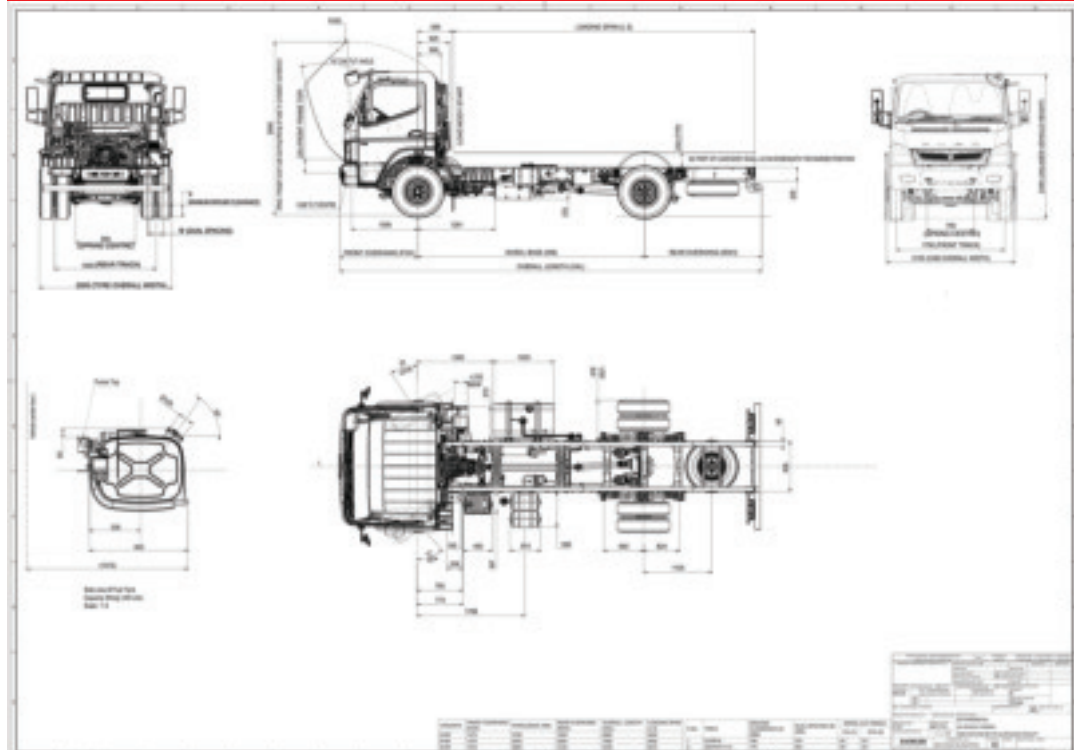
Steering		
Hydraulic Integral Power Assisted		

Brakes		
System type	Pneumatic, Foot operated, Dual line acting on all wheels	
Front	Drum	
Rear	Drum	
ABS	Yes	
Park/Emergency System	Yes	
Auxiliary Brakes	Exhaust brake	

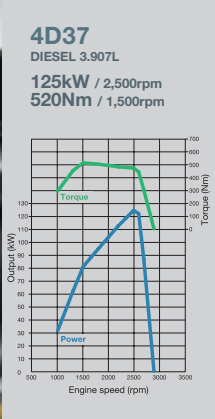
Tyres and Rims		
Tyre Sizes	235 / 75 R 17.5	
Wheel type	Drum Type	

Electrical		
System	24V	

DIMENSIONS



Sure-footed and Equipped to Maximize Your Profit



E-Viscous fan

Intermittent operation of E-Viscous fan reduces load on engine, improving fuel efficiency.

Fuel-efficient Common Rail Engine

The fuel-efficient, common rail, direct injection engine with four valves per cylinder is designed to deliver ample power and torque while lowering operating costs.



Smooth, Durable Six-speed Transmission

The six-speed (6F,1R) overdrive transmission combines multiple synchronizer rings and a cable type shift mechanism to make shifting smoother and easier. The large diameter clutch plate and organic clutch material increase durability.



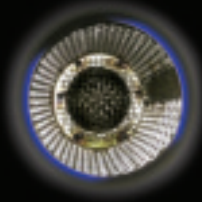
Intelligent Instrument Cluster

The LED panel makes vital information more visible, and a buzzer will sound if the engine overheats. The Trip Mileage Indicator makes it easy to monitor distance traveled, average speed and fuel consumed.



Engine RPM throttle control

Demand based rpm setting.



Fuel theft control

Meshed grill at the mouth of the fuel tank prevents fuel theft between trips.



A Great Place to Work

Fully adjustable seats. A tilt-and-telescoping steering wheel and smooth-shifting transmission. Lined roof, side trim, and handy console pocket for storage of small objects. All in a comfortable cabin that reduces driver fatigue and increases productivity.

Standard Air conditioned cabin with Power window and central locking system available to enhance the driver comfort.



LED lamp

Updated and more durable design for greater visibility in all types of light and weather conditions.



Music system

A richer and more enjoyable audio entertainment experience.

Signaling Beauty in Every Turn

Style, fit and finish. These turn signal lamps have it all.



Aerodynamic Cab Design

Aerodynamic design reduces wind resistance and lowers fuel cost. It also reduces noise and keeps the cabin quieter.



Exceptional Exteriors

Striking design ensures that your fleet always stands out from the competition.

*Actual vehicle may differ slightly from pictures shown.

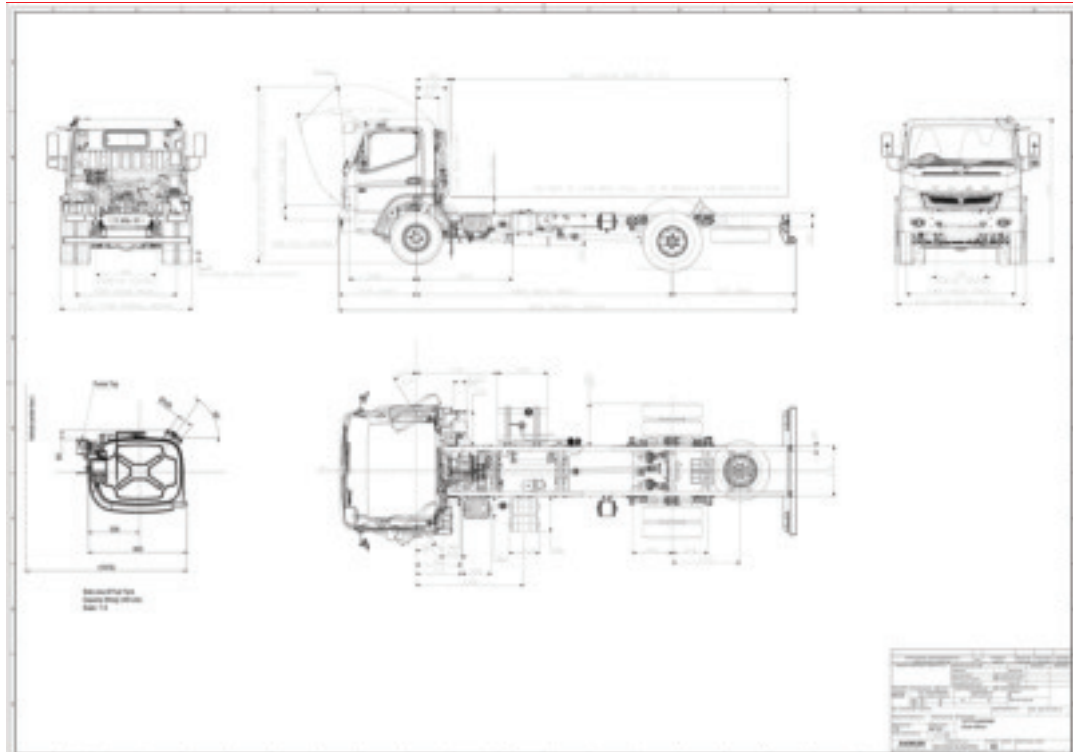
SPECIFICATIONS

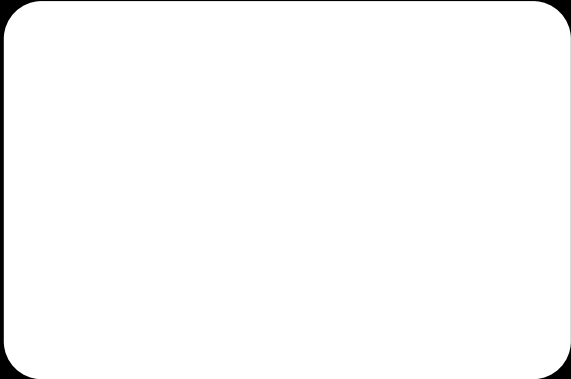
FI12-170R

Make		FUSO
Range		FI
Model		FI12-170R
Model Code		FIV1PKX2RBSA
Axle Layout		4x2
Cab		Forward Control
Crew		3 seating
Vehicle type		Rigid
Mass Data (kg)		
GVM	Manufacturer's gross vehicle mass	12800
GCM	Manufacturer's gross combination mass	12800
D/T	Permissible max towing drawing vehicle mass	12800
GA-Front	Manufacturer's front axle mass	4500
GA-Rear	Manufacturer's rear axle mass	8300
V	Permissible maximum vehicle mass	12800
AF	Permissible maximum front axle mass	4500
AR	Permissible maximum rear axle mass	8300
UF	Unladen front axle mass	2295
UR	Unladen rear axle mass	1610
UT (Tare)	Total unladen mass	3905
Permissible Body + Payload		8895
Fuel Tank (Litres)	Capacity	200
Dimensions (mm)		
OL	Overall length	8595
OW	Overall width	2210
CA	Cab to Axle	4175
OH	Overall height	2480
FOH	Front overhang	1275
ROH	Rear overhang	2400
WB	Wheelbase	4800
Performance		
Maximum Running Gradeability (%)		39.30%
Maximum Speed (SA Legislation)		80 km/h
Minimum turning radius		9.35m
Standard Equipment / Features		
Arctic White (AW1)		
Air Conditioner / Heater / Demister		
Exhaust Brake System		
Lockable Fuel Tank Cap		
12V Accessory Power Outlet		
Radio AM/FM + USB + AUX		
Central Locking and Electric Windows		
Intelligent Instrument Cluster (DTE, Fuel Economy, Engine Run Hours)		
Speedometer, Tacho, Air and Fuel Gauges		
Dual Door Mirrors + LH Front and Side Safety Mirrors		
Variable Engine RPM Control		
E-Viscous Fan (intermittent fan operation improves fuel economy)		
Telescopic and Tilt Steering Column with Steering lock		
Additional Roof Storage		
Standard Services		
4 year / 300 000 km Warranty		
15 000km maintenance schedule		

Engine	
Make	FUSO
Model	4D37
Configuration	Diesel In-line 4
Capacity (cm3)	3907
Type	Four stroke water cooled direct injection turbocharged diesel engine
Power at RPM	125kW @ 2500 - 2500 rpm
Torque at RPM	520Nm @ 1500 - 1500 rpm
Emission standards	Euro III
Generator	24V / 80A
Air Cleaner	Dry type - twin stage, paper element
Suction	Snorkel and rain cap
Governor	Electric control type
Transmission	
Make	FUSO
Model	G-85
Type	Synchromesh gears
Shift	Manual
No. of gears forward	6
Low gear ratio	6.696
High gear ratio	0.728
Clutch	
Make	LUK
Model	-
Type	Hydraulic Single Dry Plate
Diameter (mm)	362
Drive Axle	
Reduction type	Single Reduction
Final Ratio	6.33
Suspension	
Front	Semi Elliptic-multi leaf spring
Rear	Semi Elliptic-multi leaf spring
Steering	
	Hydraulic Integral Power Assisted
Brakes	
System type	Pneumatic, Foot operated, Dual line acting on all wheels
Front	Drum
Rear	Drum
ABS	Yes
Park/Emergency System	Yes
Auxiliary Brakes	Exhaust brake
Tyres and Rims	
Tyre Sizes	265 / 70 R 19.5
Wheel type	Drum Type
Electrical	
System	24V

DIMENSIONS





WWW.FUSO.CO.ZA

Manufactured by Daimler Trucks & Buses Southern Africa
Mitsubishi FUSO authorized distributor, Daimler Trucks & Buses Southern Africa