

FJ

CONSTRUCTION



*Images for illustrative purposes only

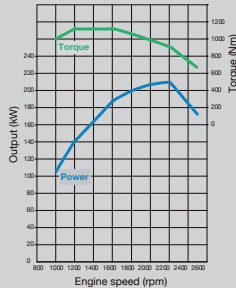
Simply Better Trucks

FUSO

Adding Power to Your Bottom Line



6S20
DIESEL 6.4L
205kW /2,200rpm
1,100Nm /1,200rpm - 1,600rpm



Engine of Profitability

From output to emissions, this engine has it all. The direct injection diesel engine delivers high output and flat torque to the smooth-shifting nine-speed transmission. Oil-lubricant fuel pumps reduce wear, increasing durability.



9-Speed Transmission with Crawler Gear

The 9-speed transmission with crawler gear provides the flexibility required for off-road operations.



Intelligent Instrument Cluster

The LED panel makes all vital information easily visible. The Trip Mileage Indicator shows distance traveled, average speed, and fuel consumed. Variable green band indicator shows the driver the gear and speed required to minimize overall fuel consumption.



E-Viscous fan

Intermittent operation of E-Viscous fan reduces load on engine, improving fuel efficiency.



Cruise Control

Cruise control reduces driver fatigue. The driver can set a cruising speed, then relax.

Engine RPM throttle control

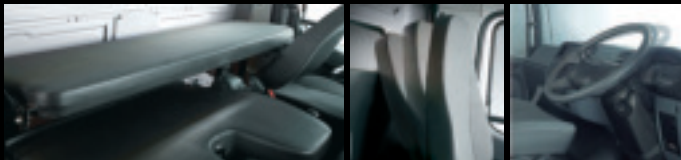
Demand based rpm setting.



Fuel theft control

Meshed grill at the mouth of the fuel tank prevents fuel theft between trips.

The picture is an image.



More Comfortable Cabin

Greater comfort means greater safety. Three way adjustable, air suspended seats allow you to choose an optimum driving posture. Air conditioned cabin with Power window and central locking system reduce driver fatigue. The extended day cabin includes a fold-down bunk for naps.



Suspensions with Enhanced Functionality

Multi-leaf bogie type rear suspensions have more and thicker leaves, for longer life and heavier loads.



Anti-roll Bars for with Greater Safety

Anti-roll bars increase vehicle stability. Both front and rear anti-roll bars are standard equipment of FJ trucks for construction applications.

Extra Rugged for Longer Life and Heavier Loads

The thicker, deeper long members in the FJ chassis are designed to last longer and support heavier loads. The longer, thicker bulges in the cross members add additional strength. Both are shot-peened and powder coated to increase surface strength and prevent corrosion.

Differential Lock Prevents Getting Bugged Down

The differential lock that overcomes one-wheel spinning and makes trucks easier to operate in slushy or bogged down conditions is standard equipment.



LED lamp

Updated and more durable design for greater visibility in all types of light and weather conditions.



Music system

A richer and more enjoyable audio entertainment experience.



Dual Chamber Headlamps

Conventional headlamps switch between high and low beam bulbs. In dual chamber headlamps, both bulbs are on when high beam is activated, for more intense light and higher visibility.

Exceptional Exteriors

Striking design ensures that your fleet always stands out from the competition.

*Actual vehicle may differ slightly from pictures shown

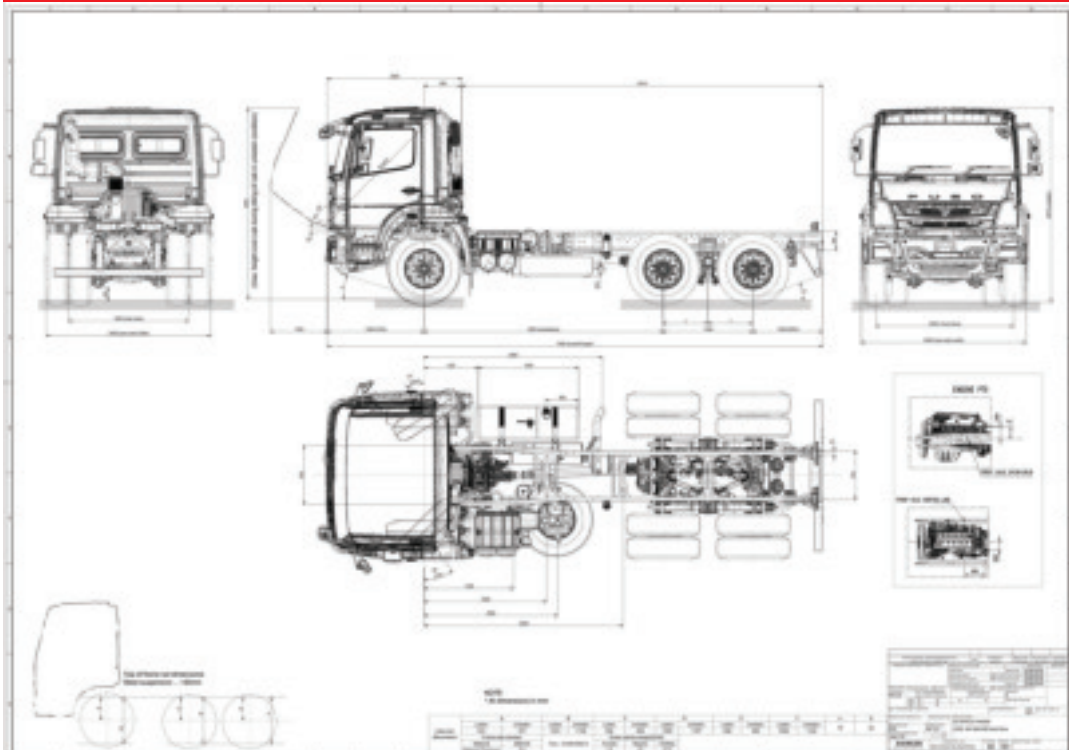
SPECIFICATIONS

FJ26-280C TIP/MIX

Make		FUSO
Range		FJ
Model		FJ26-280C
Model Code		FJ3WKM2RBSA
Axle Layout		6x4
Cab		Extended Day Cab
Crew		3 seating
Vehicle type		Tipper/Mixer
Mass Data (kg)		
GVM	Manufacturer's gross vehicle mass	27500
GCM	Manufacturer's gross combination mass	27500
D/T	Permissible max towing drawing vehicle mass	27500
GA-Front	Manufacturer's front axle mass	7500
GA-Rear	Manufacturer's rear axle mass	20000
V	Permissible maximum vehicle mass	25500
AF	Permissible maximum front axle mass	7500
AR	Permissible maximum rear axle mass	18000
UF	Unladen front axle mass	4181
UR	Unladen rear axle mass	4053
UT (Tare)	Total unladen mass	8234
Permissible Body + Payload		17266
Fuel Tank (Litres)	Capacity	200
Dimensions (mm)		
OL	Overall length	7460
OW	Overall width	2490
CA	Cab to Axle	3685
OH	Overall height	2975
FOH	Front overhang	1460
ROH	Rear overhang	1050
WB	Wheelbase	4275
Performance		
Maximum Running / Restart Gradeability (%)		62 / 40%
Maximum Speed (SA Legislation)		80 km/h
Minimum turning radius		8.9 m
Standard Equipment / Features		
Arctic White (AW1)		
All Steel Forward Control Tilting Day Cab		
Air Suspended Driver's Seat with Integral Seat Belt		
ELR 3-Point with Centre Lap Belt & Driver's Seat Belt Reminder		
Air Conditioner / Heater / Demister		
12V Accessory Power Outlet		
Radio AM/FM + USB + AUX		
Central Locking and Electric Windows		
Speedometer, Tacho, Air and Fuel Gauges		
Dual Door Mirrors + LH Front and Side Safety Mirrors		
Variable Engine RPM Control		
Cruise Control		
Engine Brake and Exhaust Brake		
E-Viscous Fan (Intermittent Operation Fan improves fuel economy)		
Differential Lock Buzzer		
Clutch Wear Indicator (Preventative Maintenance)		
PSM (Parameterizable Special Module)		
Anti-Roll / Stabilizer Bars (Front and Rear)		
Intelligent Instrumental Cluster with On-board Diagnostics		
Standard Services		
4 year / 300 000 km Warranty		
15 000 km maintenance schedule / 400 hrs maintenance schedule		

Engine	
Make	FUSO
Model	6S20 205
Configuration	Diesel In-line 6
Capacity (cm3)	6373
Type	Four stroke water cooled direct injection diesel engine
Power at RPM	205 kW @ 2200 rpm
Torque at RPM	1100 Nm @ 1200 - 1600 rpm
Emission standards	Euro III
Generator	24V / 80A
Air Cleaner	Dry type - Twin Stage, Paper element
Suction	Snorkel and rain cap
Governor	Electric control type
Transmission	
Make	FUSO
Model	G131
Type	Synchromesh gears
Shift	Manual
No. of gears forward	9
Low gear ratio	14.57
High gear ratio	1
Clutch	
Make	FUSO
Model	-
Type	Dry-Single plate, Hydraulic actuated control with servo assistance
Diameter (mm)	430
Drive Axle	
Make	FUSO
Reduction type	Full Floating Type, Hub Reduction, Spiral Gears
Final Ratio	5.39
Suspension	
Front	Parabolic leaf spring
Rear	Semi Elliptic - Auxiliary spring
Stabilisers	Yes
Steering	
	Power Assisted - Hydraulic
Brakes	
System type	Pneumatic
Front	Drum
Rear	Drum
ABS +	Yes
Park/Emergency System	Pneumatically operated Spring actuated with hand brake
Auxiliary Brakes	Engine brake and Exhaust brake
Tyres and Rims	
Tyre Sizes	315 / 80 R 22.5
Wheel type	Radial, Tubeless
Electrical	
System	24V

DIMENSIONS





WWW.FUSO.CO.ZA

Manufactured by Daimler Trucks & Buses Southern Africa
Mitsubishi FUSO authorized distributor, Daimler Trucks & Buses Southern Africa