

FJ

RIGID



*Images for illustrative purposes only

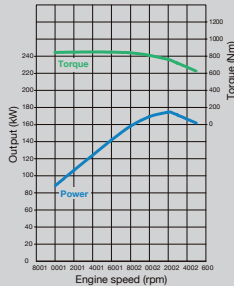
Simply Better Trucks

FUSO

Delivering Profit for the Various Load



6S20
DIESEL 6.4L
170kW /2,200rpm
810Nm /1,200rpm - 1,600rpm



Engine of Profitability

From output to emissions, this engine has it all. The direct injection diesel engine delivers high output and flat torque to the smooth-shifting six-speed transmission. Oil-lubricant fuel pumps reduce wear, increasing durability.



Smooth, Durable Six-speed Transmission

The six-speed (6F,1R) overdrive transmission combines multiple synchronizer rings and a cable type shift mechanism to make shifting smoother and easier. The large diameter clutch plate and organic clutch material increase durability.



Intelligent Instrument Cluster

The LED panel makes all vital information easily visible. The Trip Mileage Indicator shows distance traveled, average speed, and fuel consumed. Variable green band indicator shows the driver the gear and speed required to minimize overall fuel consumption.



Cruise Control

Cruise control reduces driver fatigue. The driver can set a cruising speed, then relax.

Engine RPM throttle control

Demand based rpm setting.



Fuel theft control

Meshed grill at the mouth of the fuel tank prevents fuel theft between trips.



Aerodynamic Cab Design

The aerodynamic design of the cab reduces wind resistance. While increasing fuel efficiency, it also reduces noise for a quieter, more comfortable drive.

The picture is an image.



More Comfortable Cabin

Three-way adjustable seats and tilt-and-telescoping steering wheel allow the driver to choose an optimum driving posture. The extended day cabin includes a fold-down bunk for naps.

Standard Air conditioned cabin with Power window, central locking system and Air suspended seat available to enhance the driver's comfort.



Suspensions with Enhanced Functionality

Parabolic front suspension increases comfort and drivability, while the multi leaf rear suspensions have more and thicker leaves, to last longer and carry heavier loads.



Anti-roll Bars for with Greater Safety

Anti-roll bars improve road grip and vehicle stability, especially when cornering or changing lanes at high speed. Front and rear anti roll bar is standard.



LED lamp

Updated and more durable design for greater visibility in all types of light and weather conditions.



Music system

A richer and more enjoyable audio entertainment experience.



Dual Chamber Headlamps

Conventional headlamps switch between high and low beam bulbs. In dual chamber headlamps, both bulbs are on when high beam is activated, for more intense light and higher visibility.

Exceptional Exteriors

Striking design ensures that your fleet always stands out from the competition.

*Actual vehicle may differ slightly from pictures shown

SPECIFICATIONS

FJ16-230S

Make	FUSO	
Range	FJ	
Model	FJ16-230S	
Model Code	FJX4WL1RBSA	
Axle Layout	4x2	
Cab	Extended Day Cab	
Crew	3 seating	
Vehicle type	Freight Carrier	

Mass Data (kg)		
GVM	Manufacturer's gross vehicle mass	16000
GCM	Manufacturer's gross combination mass	24000
D/T	Permissible max towing drawing vehicle mass	24000
GA-Front	Manufacturer's front axle mass	7000
GA-Rear	Manufacturer's rear axle mass	10000
V	Permissible maximum vehicle mass	16000
AF	Permissible maximum front axle mass	7000
AR	Permissible maximum rear axle mass	9000
UF	Unladen front axle mass	3754
UR	Unladen rear axle mass	2236
UT (Tare)	Total unladen mass	5990
Permissible Body + Payload		10010
Fuel Tank (Litres)	Capacity	290

Dimensions (mm)		
OL	Overall length	9060
OW	Overall width	2490
CA	Cab to Axle	4490
OH	Overall height	2980
FOH	Front overhang	1460
ROH	Rear overhang	2500
WB	Wheelbase	5100

Performance		
Maximum Running Gradeability (%)		38.8%
Maximum Speed (SA Legislation)		80 km/h
Minimum turning radius		9.6 m

Standard Equipment / Features

Arctic White (AW1)
Air Suspended Driver's Seat with Integral Seat Belt
ELR 3-Point with Centre Lap Belt & Driver's Seat Belt Reminder
Air Conditioner / Heater / Demister
12V Accessory Power Outlet
Radio AM/FM + USB + AUX
Central Locking and Electric Windows
Dual Door Mirrors + LH Front and Side Safety Mirrors
Variable Engine RPM Control
Cruise Control
Engine Brake and Exhaust Brake
E-Viscous Fan (Intermittent Operation Fan)
Differential Lock Buzzer
Clutch Wear Indicator (Preventative Maintenance)
Daytime Running Lights (LED)
Intelligent Instrumental Cluster with On-board Diagnostics

Standard Services

4 years / 300 000 km Warranty
15 000 km / 20 000 km / 25 000 km maintenance schedule

Engine	
Make	FUSO
Model	6S20
Configuration	Diesel In-line 6
Capacity (cm3)	6373
Type	Four stroke water cooled direct injection diesel engine
Power at RPM	170 kW @ 2200 rpm
Torque at RPM	810 Nm @ 1200 - 1600 rpm
Emission standards	Euro III
Generator	24V / 80A
Air Cleaner	Dry type - Twin Stage, Paper element
Suction	Snorkel and rain cap
Governor	Electric control type

Transmission

Make	FUSO
Model	G85
Type	Synchromesh gears
Shift	Manual
No. of gears forward	6
Low gear ratio	0.73
High gear ratio	6.7

Clutch

Make	FUSO
Model	-
Type	Dry-Single plate, Hydraulic actuated control with servo assistance
Diameter (mm)	395

Drive Axle

Make	FUSO
Reduction type	Single reduction, Hypoid gear
Final Ratio	5.875

Suspension

Front	Parabolic leaf spring
Rear	Semi Elliptic - Auxiliary spring
Stabilisers	Yes

Steering

	Power Assisted - Hydraulic
--	----------------------------

Brakes

System type	Pneumatic
Front	Drum
Rear	Drum
ABS	Yes
Park/Emergency System	Pneumatically operated Spring actuated with hand brake
Auxiliary Brakes	Engine brake and Exhaust brake

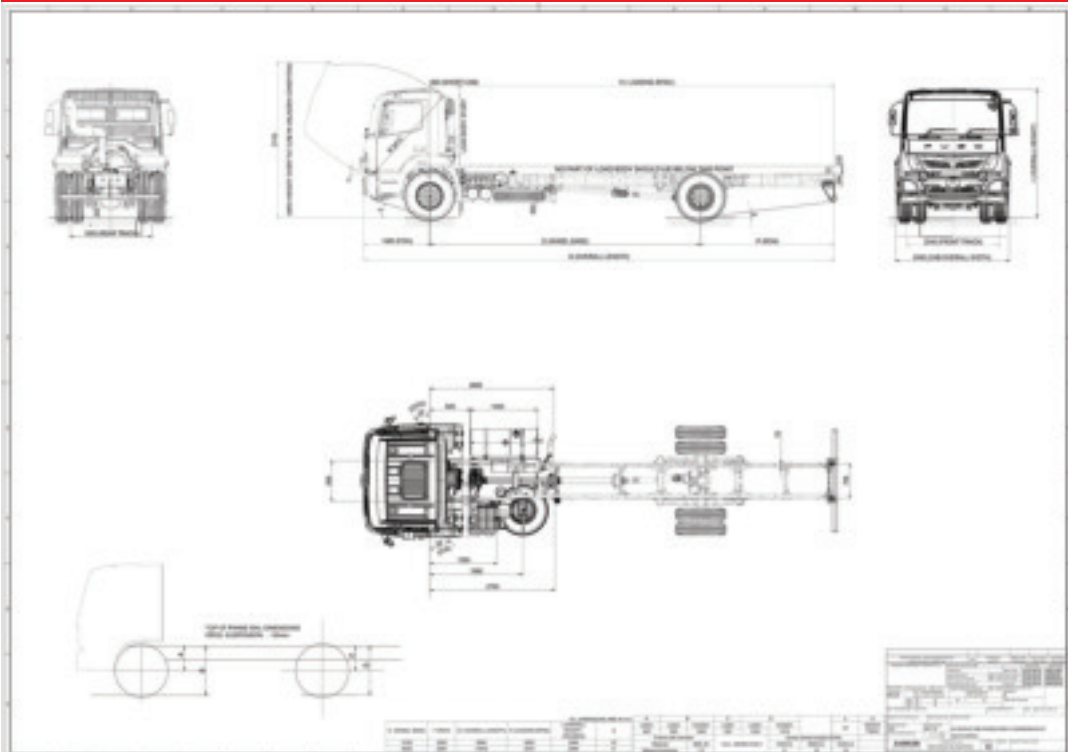
Tyres and Rims

Tyre Sizes	12 R 22.5
Wheel type	Radial, Tubeless

Electrical

System	24V
--------	-----

DIMENSIONS



SPECIFICATIONS

FJ16-230L

Make	FUSO	
Range	FJ	
Model	FJ16-230L	
Model Code	FJX4WP1RBSA	
Axle Layout	4x2	
Cab	Extended Day Cab	
Crew	3 seating	
Vehicle type	Freight Carrier	

Mass Data (kg)		
GVM	Manufacturer's gross vehicle mass	16000
GCM	Manufacturer's gross combination mass	24000
D/T	Permissible max towing drawing vehicle mass	24000
GA-Front	Manufacturer's front axle mass	7000
GA-Rear	Manufacturer's rear axle mass	10000
V	Permissible maximum vehicle mass	16000
AF	Permissible maximum front axle mass	7000
AR	Permissible maximum rear axle mass	9000
UF	Unladen front axle mass	3849
UR	Unladen rear axle mass	2231
UT (Tare)	Total unladen mass	6080
Permissible Body + Payload		9920
Fuel Tank (Litres)	Capacity	290

Dimensions (mm)		
OL	Overall length	10410
OW	Overall width	2490
CA	Cab to Axle	5390
OH	Overall height	2980
FOH	Front overhang	1460
ROH	Rear overhang	2950
WB	Wheelbase	6000

Performance		
Maximum Running Gradeability (%)		38.8%
Maximum Speed (SA Legislation)		80 km/h
Minimum turning radius		11 m

Standard Equipment / Features		
Arctic White (AW1)		
Air Suspended Driver's Seat with Integral Seat Belt		
ELR 3-Point with Centre Lap Belt & Driver's Seat Belt Reminder		
Air Conditioner / Heater / Demister		
12V Accessory Power Outlet		
Radio AM/FM + USB + AUX		
Central Locking and Electric Windows		
Dual Door Mirrors + LH Front and Side Safety Mirrors		
Variable Engine RPM Control		
Cruise Control		
Engine Brake and Exhaust Brake		
E-Viscous Fan (Intermittent Operation Fan)		
Differential Lock Buzzer		
Clutch Wear Indicator (Preventative Maintenance)		
Daytime Running Lights (LED)		
Intelligent Instrumental Cluster with On-board Diagnostics		
Anti-Roll / Stabiliser Bars (Front and Rear)		

Standard Services		
4 year / 300 000 km Warranty		
15 000 km / 20 000 km / 25 000 km maintenance schedule		

Engine	
Make	FUSO
Model	6S20
Configuration	Diesel In-line 6
Capacity (cm3)	6373
Type	Four stroke water cooled direct injection diesel engine
Power at RPM	170 kW @ 2200 rpm
Torque at RPM	810 Nm @ 1200 - 1600 rpm
Emission standards	Euro III
Generator	24V / 80A
Air Cleaner	Dry type - Twin Stage, Paper element
Suction	Snorkel and rain cap
Governor	Electric control type

Transmission	
Make	FUSO
Model	G85
Type	Synchromesh gears
Shift	Manual
No. of gears forward	6
Low gear ratio	0.73
High gear ratio	6.7

Clutch	
Make	FUSO
Model	-
Type	Dry-Single plate, Hydraulic actuated control with servo assistance
Diameter (mm)	395

Drive Axle	
Make	FUSO
Reduction type	Single reduction, Hypoid gear
Final Ratio	5.875

Suspension	
Front	Parabolic leaf spring
Rear	Semi Elliptic - Auxiliary spring
Stabilisers	Yes

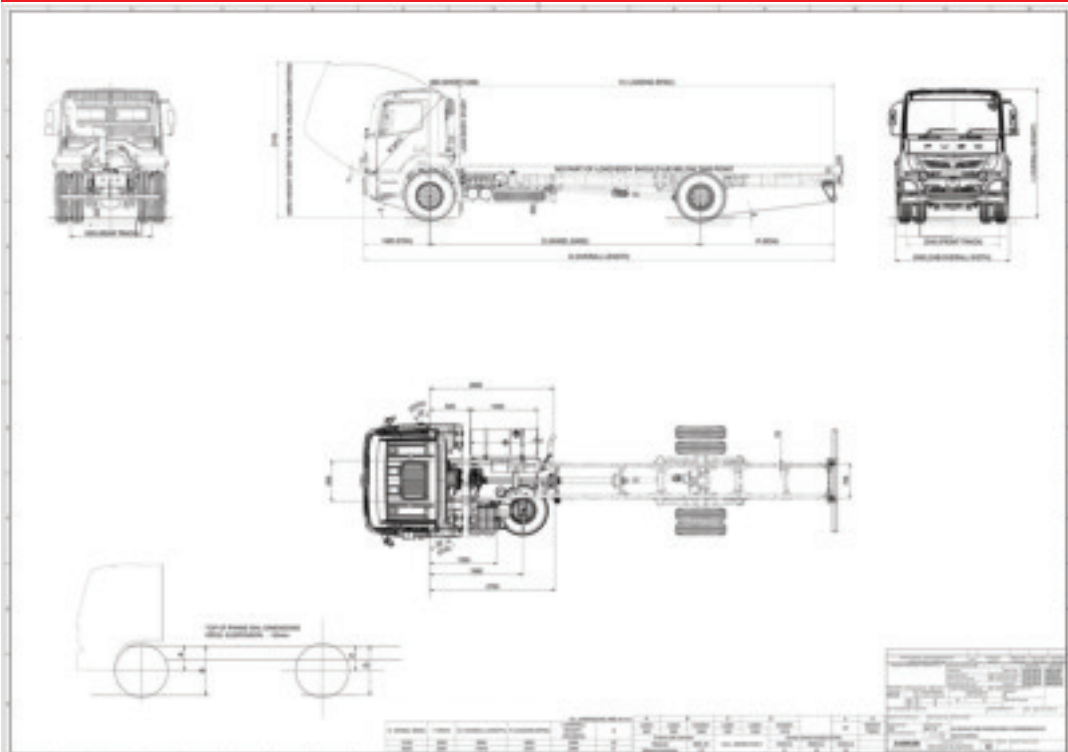
Steering	
	Power Assisted - Hydraulic

Brakes	
System type	Pneumatic
Front	Drum
Rear	Drum
ABS	Yes
Park/Emergency System	Pneumatically operated Spring actuated with hand brake
Auxiliary Brakes	Engine brake and Exhaust brake

Tyres and Rims	
Tyre Sizes	12 R 22.5
Wheel type	Radial, Tubeless

Electrical	
System	24V

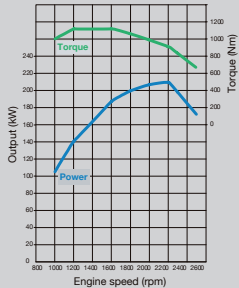
DIMENSIONS



Delivering Profit for the Heavier Load



6S20
DIESEL 6.4L
205kW /2,200rpm
1,100Nm /1,200rpm - 1,600rpm



Engine of Profitability

From output to emissions, this engine has it all. The direct injection diesel engine delivers high output and flat torque to the smooth-shifting nine-speed transmission. Oil-lubricant fuel pumps reduce wear, increasing durability.



9-Speed Transmission with Crawler Gear

The 9-speed transmission with crawler gear provides the flexibility required for off-road operations.



Intelligent Instrument Cluster

The LED panel makes all vital information easily visible. The Trip Mileage Indicator shows distance traveled, average speed, and fuel consumed. Variable green band indicator shows the driver the gear and speed required to minimize overall fuel consumption.



Cruise Control

Cruise control reduces driver fatigue. The driver can set a cruising speed, then relax.

Engine RPM throttle control

Demand based rpm setting.



Fuel theft control

Meshed grill at the mouth of the fuel tank prevents fuel theft between trips.



Aerodynamic Cab Design

The aerodynamic design of the cab reduces wind resistance. While increasing fuel efficiency, it also reduces noise for a quieter, more comfortable drive.

The picture is an image.



More Comfortable Cabin

Three-way adjustable seats and tilt-and-telescoping steering wheel allow the driver to choose an optimum driving posture. The extended day cabin includes a fold-down bunk for naps.

Standard Air conditioned cabin with Power window, central locking system and Air suspended seat available to enhance the driver's comfort.



Suspensions with Enhanced Functionality

Parabolic front suspension increases comfort and drivability, while the multi leaf rear suspensions have more and thicker leaves, to last longer and carry heavier loads.



Anti-roll Bars for with Greater Safety

Anti-roll bars improve road grip and vehicle stability, especially when cornering or changing lanes at high speed. Front ARB and Rear ARB comes standard.



LED lamp

Updated and more durable design for greater visibility in all types of light and weather conditions.



Music system

A richer and more enjoyable audio entertainment experience.



Dual Chamber Headlamps

Conventional headlamps switch between high and low beam bulbs. In dual chamber headlamps, both bulbs are on when high beam is activated, for more intense light and higher visibility.

Built Extra Rugged for Longer Life and Heavier Loads

The thicker, deeper long members in the FJ chassis are designed to last longer and support heavier loads. The longer, thicker bulges in the cross members add additional strength. Both are shot-peened and powder coated to increase surface strength and prevent corrosion.

Exceptional Exteriors

Striking design ensures that your fleet always stands out from the competition.

*Actual vehicle may differ slightly from pictures shown

SPECIFICATIONS

FJ18-280L

Make	FUSO	
Range	FJ	
Model	FJ18-280L	
Model Code	FJX4WP2RBSA	
Axle Layout	4x2	
Cab	Extended Day Cab	
Crew	3 seating	
Vehicle type	Rigid	

Mass Data (kg)		
GVM	Manufacturer's gross vehicle mass	18500
GCM	Manufacturer's gross combination mass	32000
D/T	Permissible max towing drawing vehicle mass	32000
GA-Front	Manufacturer's front axle mass	7500
GA-Rear	Manufacturer's rear axle mass	11000
V	Permissible maximum vehicle mass	16500
AF	Permissible maximum front axle mass	7500
AR	Permissible maximum rear axle mass	9000
UF	Unladen front axle mass	4145
UR	Unladen rear axle mass	2449
UT (Tare)	Total unladen mass	6594
Permissible Body + Payload		9906
Fuel Tank (Litres)	Capacity	290

Dimensions (mm)		
OL	Overall length	10410
OW	Overall width	2490
CA	Cab to Axle	4490
OH	Overall height	2985
FOH	Front overhang	1460
ROH	Rear overhang	2950
WB	Wheelbase	6000

Performance		
Gradeability at Permissible Maximum Weight (V)		80%
Maximum Speed (SA Legislation)		80 km/h
Minimum turning radius		11.91 m

Standard Equipment / Features		
Arctic White (AW1)		
Air Suspended Driver's Seat with Integral Seat Belt		
ELR 3-Point with Centre Lap Belt & Driver's Seat Belt Reminder		
Air Conditioner / Heater / Demister		
12V Accessory Power Outlet		
Radio AM/FM + USB + AUX		
Central Locking and Electric Windows		
Dual Door Mirrors + LH Front and Side Safety Mirrors		
Variable Engine RPM Control		
Cruise Control		
Engine Brake and Exhaust Brake		
E-Viscous Fan (Intermittent Operation Fan)		
Differential Lock Buzzer		
Clutch Wear Indicator (Preventative Maintenance)		
Daytime Running Lights (LED)		
Intelligent Instrumental Cluster with On-board Diagnostics		
Anti-Roll / Stabiliser Bars (Front and Rear)		

Standard Services		
4 year / 300 000 km Warranty		
15 000 km / 20 000 km / 25 000 km maintenance schedule		

Engine	
Make	FUSO
Model	6S20
Configuration	Diesel In-line 6
Capacity (cm3)	6373
Type	Four stroke water cooled direct injection diesel engine
Power at RPM	205 kW @ 2200 rpm
Torque at RPM	1100 Nm @ 1200 - 1600 rpm
Emission standards	Euro III
Generator	24V / 80A
Air Cleaner	Dry type - Twin Stage, Paper element
Suction	Snorkel and rain cap
Governor	Electric control type

Transmission	
Make	FUSO
Model	G131
Type	Synchromesh gears
Shift	Manual
No. of gears forward	9
1st gear ratio	14.57
Top gear ratio	1.0

Clutch	
Make	FUSO
Model	-
Type	Dry-Single plate, Hydraulic actuated control with servo assistance
Diameter (mm)	395

Drive Axle	
Make	FUSO
Reduction type	Single reduction, Hypoid gear
Final Ratio	4.3

Suspension	
Front	Parabolic leaf spring
Rear	Semi Elliptic - Auxiliary spring
Stabilisers	Yes

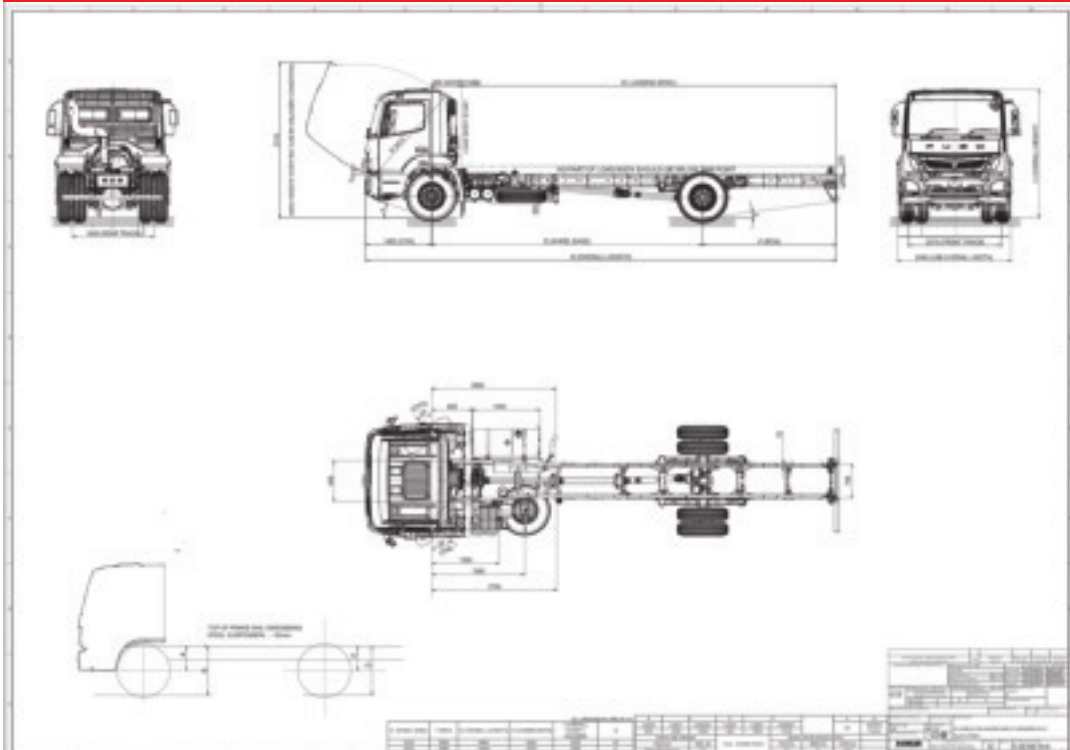
Steering	
	Power Assisted - Hydraulic

Brakes	
System type	Pneumatic
Front	Drum
Rear	Drum
ABS	Yes
Park/Emergency System	Pneumatically operated Spring actuated with hand brake
Auxiliary Brakes	Engine brake and Exhaust brake

Tyres and Rims	
Tyre Sizes	315 / 80 R 22.5
Wheel type	Radial, Tubeless

Electrical	
System	24V

DIMENSIONS



SPECIFICATIONS

FJ18-280S

Make	FUSO	
Range	FJ	
Model	FJ18-280S	
Model Code	FJX4WL2RBSA	
Axle Layout	4x2	
Cab	Extended Day Cab	
Crew	3 seating	
Vehicle type	Rigid	

Mass Data (kg)		
GVM	Manufacturer's gross vehicle mass	18500
GCM	Manufacturer's gross combination mass	32000
D/T	Permissible max towing drawing vehicle mass	32000
GA-Front	Manufacturer's front axle mass	7500
GA-Rear	Manufacturer's rear axle mass	11000
V	Permissible maximum vehicle mass	16500
AF	Permissible maximum front axle mass	7500
AR	Permissible maximum rear axle mass	9000
UF	Unladen front axle mass	4106
UR	Unladen rear axle mass	2418
UT (Tare)	Total unladen mass	6524
Permissible Body + Payload		9976
Fuel Tank (Litres)	Capacity	290

Dimensions (mm)		
OL	Overall length	9060
OW	Overall width	2490
CA	Cab to Axle	4490
OH	Overall height	2985
FOH	Front overhang	1460
ROH	Rear overhang	2500
WB	Wheelbase	5100

Performance		
Gradeability at Permissible Maximum Weight (V)		80%
Maximum Speed (SA Legislation)		80 km/h
Minimum turning radius		10.212 m

Standard Equipment / Features		
Arctic White (AW1)		
Air Suspended Driver's Seat with Integral Seat Belt		
ELR 3-Point with Centre Lap Belt & Driver's Seat Belt Reminder		
Air Conditioner / Heater / Demister		
12V Accessory Power Outlet		
Radio AM/FM + USB + AUX		
Central Locking and Electric Windows		
Dual Door Mirrors + LH Front and Side Safety Mirrors		
Variable Engine RPM Control		
Cruise Control		
Engine Brake and Exhaust Brake		
E-Viscous Fan (Intermittent Operation Fan)		
Differential Lock Buzzer		
Clutch Wear Indicator (Preventative Maintenance)		
Daytime Running Lights (LED)		
Intelligent Instrumental Cluster with On-board Diagnostics		
Anti-Roll / Stabiliser Bars (Front and Rear)		

Standard Services		
4 year / 300 000 km Warranty		
15 000 km / 20 000 km / 25 000 km maintenance schedule		

Engine	
Make	FUSO
Model	6S20
Configuration	Diesel Inline 6
Capacity (cm3)	6373
Type	Four stroke water cooled direct injection diesel engine
Power at RPM	205 kW @ 2200 rpm
Torque at RPM	1100 Nm @ 1200 - 1600 rpm
Emission standards	Euro III
Generator	24V / 80A
Air Cleaner	Dry type - Twin Stage, Paper element
Suction	Snorkel and rain cap
Governor	Electric control type

Transmission	
Make	FUSO
Model	G131
Type	Synchromesh gears
Shift	Manual
No. of gears forward	9
1st gear ratio	14.57
Top gear ratio	1.0

Clutch	
Make	FUSO
Model	-
Type	Dry-Single plate, Hydraulic actuated control with servo assistance
Diameter (mm)	395

Drive Axle	
Make	FUSO
Reduction type	Single reduction, Hypoid gear
Final Ratio	4.3

Suspension	
Front	Parabolic leaf spring
Rear	Semi Elliptic - Auxiliary spring
Stabilisers	Yes

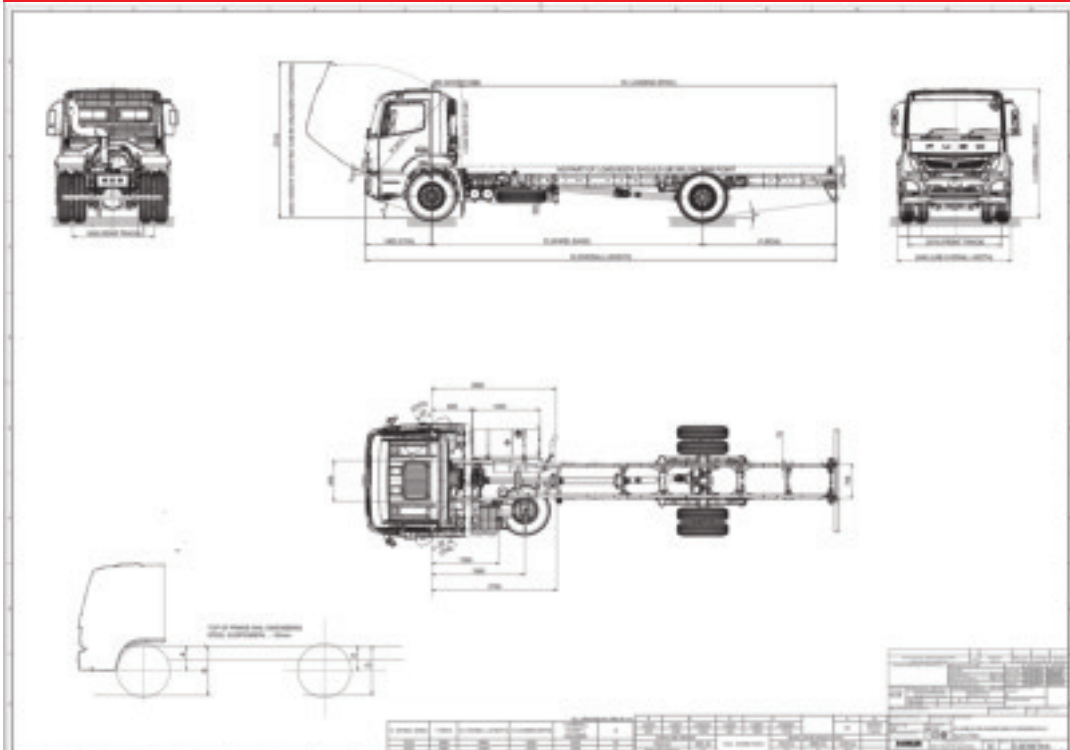
Steering	
	Power Assisted - Hydraulic

Brakes	
System type	Pneumatic
Front	Drum
Rear	Drum
ABS	Yes
Park/Emergency System	Pneumatically operated Spring actuated with hand brake
Auxiliary Brakes	Engine brake and Exhaust brake

Tyres and Rims	
Tyre Sizes	315 / 80 R 22.5
Wheel type	Radial, Tubeless

Electrical	
System	24V

DIMENSIONS



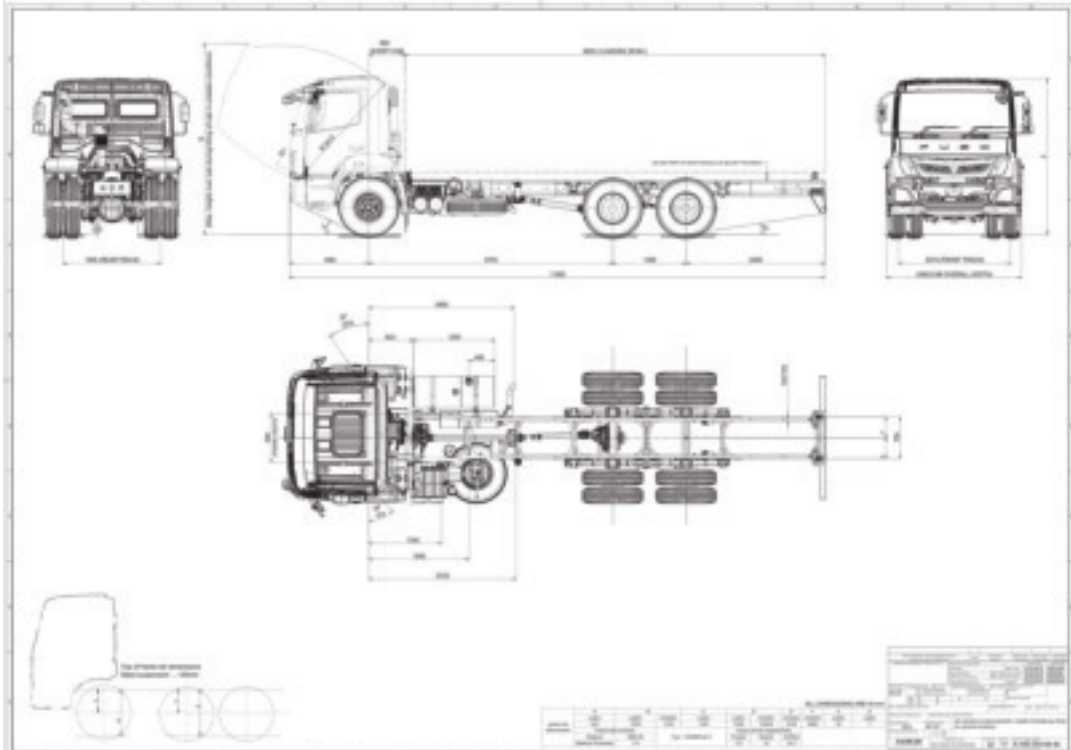
SPECIFICATIONS

FJ26-280R

Make		FUSO
Range		FJ
Model		FJ26-280R
Model Code		FJX1WT2RBSA
Axle Layout		6x2
Cab		Extended Day Cab
Crew		3 seating
Vehicle type		Rigid
Mass Data (kg)		
GVM	Manufacturer's gross vehicle mass	26500
GCM	Manufacturer's gross combination mass	34000
D/T	Permissible max towing drawing vehicle mass	34000
GA-Front	Manufacturer's front axle mass	7500
GA-Rear	Manufacturer's rear axle mass	19000
V	Permissible maximum vehicle mass	25500
AF	Permissible maximum front axle mass	7500
AR	Permissible maximum rear axle mass	18000
UF	Unladen front axle mass	3815
UR	Unladen rear axle mass	3475
UT (Tare)	Total unladen mass	7290
Permissible Body + Payload		18210
Fuel Tank (Litres)	Capacity	290
Dimensions (mm)		
OL	Overall length	11995
OW	Overall width	2490
CA	Cab to Axle	5695
OH	Overall height	2985
FOH	Front overhang	1460
ROH	Rear overhang	3485
WB	Wheelbase	6375
Performance		
Gradeability at Permissible Maximum Weight (V)		52%
Maximum Speed (SA Legislation)		80 km/h
Minimum turning radius		12.6 m
Standard Equipment / Features		
Arctic White (AW1)		
All Steel Forward Control Tilting Day Cab		
Air Suspended Driver's Seat with Integral Seat Belt		
ELR 3-Point with Centre Lap Belt & Driver's Seat Belt Reminder		
Air Conditioner / Heater / Demister		
12V Accessory Power Outlet		
Radio AM/FM + USB + AUX		
Central Locking and Electric Windows		
Dual Door Mirrors + LH Front and Side Safety Mirrors		
Variable Engine RPM Control		
Cruise Control		
Engine Brake and Exhaust Brake		
E-Viscous Fan (Intermittent Operation Fan)		
Differential Lock Buzzer		
Clutch Wear Indicator (Preventative Maintenance)		
Daytime Running Lights (LED)		
Intelligent Instrumental Cluster with On-board Diagnostics		
Anti-Roll / Stabiliser Bars (Front and Rear)		
Standard Services		
4 year / 300 000 km Warranty		
15 000 km / 20 000km / 25 000km maintenance schedule		

Engine	
Make	FUSO
Model	6S20 205
Configuration	Diesel In-line 6
Capacity (cm3)	6373
Type	Four stroke water cooled direct injection diesel engine
Power at RPM	205 kW @ 2200 rpm
Torque at RPM	1100 Nm @ 1200 - 1600 rpm
Emission standards	Euro III
Generator	24V / 80A
Air Cleaner	Dry type - Twin Stage, Paper element
Suction	Snorkel and rain cap
Governor	Electric control type
Transmission	
Make	FUSO
Model	G131
Type	Synchromesh gears
Shift	Manual
No. of gears forward	9
1st gear ratio	14.57
Top gear ratio	1.0
Clutch	
Make	FUSO
Model	-
Type	Dry-Single plate, Hydraulic actuated control with servo assistance
Diameter (mm)	395
Drive Axle	
Make	FUSO
Reduction type	Single reduction, Hypoid gear
Final Ratio	4.30
Suspension	
Front	Parabolic leaf spring
Rear	Semi Elliptic - Auxiliary spring
Stabilisers	Yes
Steering	
	Power Assisted - Hydraulic
Brakes	
System type	Pneumatic
Front	Drum
Rear	Drum
ABS	Yes
Park/Emergency System	Pneumatically operated Spring actuated with hand brake
Auxiliary Brakes	Engine brake and Exhaust brake
Tyres and Rims	
Tyre Sizes	315 / 80 R 22.5
Wheel type	Radial, Tubeless
Electrical	
System	24V

DIMENSIONS





WWW.FUSO.CO.ZA

Manufactured by Daimler Trucks & Buses Southern Africa
Mitsubishi FUSO authorized distributor, Daimler Trucks & Buses Southern Africa